

Post fitting for external thread, for flat posts

1.12

For M3–M6

AISI 316 material group

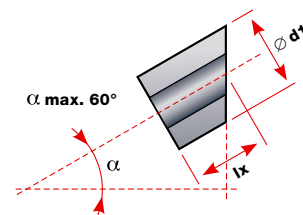
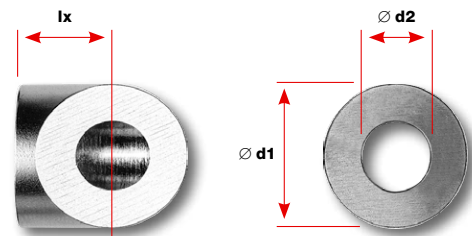
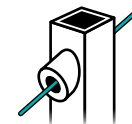
Dimensions

Order No.	α Pitch angle	a For external thread	\varnothing d1 mm	\varnothing d2 mm
30862-0401-00	0°	M4	10	4.3
30862-0420-00	20°	M4	10	4.3
30862-0422-00	22.5°	M4	10	4.3
30862-0425-00	25°	M4	10	4.3
30862-0427-00	27.5°	M4	10	4.3
30862-0430-00	30°	M4	10	4.3
30862-0432-00	32.5°	M4	10	4.3
30862-0435-00	35°	M4	10	4.3
30862-0437-00	37.5°	M4	10	4.3
30862-0440-00	40°	M4	10	4.3
30862-0442-00	42.5°	M4	10	4.3
30862-0445-00	45°	M4	10	4.3
30862-0447-00	47.5°	M4	10	4.3
30862-0450-00	50°	M4	10	4.3
30862-0452-00	52.5°	M4	10	4.3
30862-0455-00	55°	M4	10	4.3
30862-0457-00	57.5°	M4	10	4.3
30862-0460-00	60°	M4	10	4.3
30862-0501-00	0°	M5	10	5.5
30862-0520-00	20°	M5	10	5.5
30862-0522-00	22.5°	M5	10	5.5
30862-0525-00	25°	M5	10	5.5
30862-0527-00	27.5°	M5	10	5.5
30862-0530-00	30°	M5	10	5.5
30862-0532-00	32.5°	M5	10	5.5
30862-0535-00	35°	M5	10	5.5
30862-0537-00	37.5°	M5	10	5.5
30862-0540-00	40°	M5	10	5.5
30862-0542-00	42.5°	M5	10	5.5
30862-0545-00	45°	M5	10	5.5
30862-0547-00	47.5°	M5	10	5.5
30862-0550-00	50°	M5	10	5.5
30862-0552-00	52.5°	M5	10	5.5
30862-0555-00	55°	M5	10	5.5
30862-0557-00	57.5°	M5	10	5.5
30862-0560-00	60°	M5	10	5.5
30862-0601-00	0°	M6	13	7.3
30862-0620-00	20°	M6	13	7.3
30862-0622-00	22.5°	M6	13	7.3
30862-0625-00	25°	M6	13	7.3
30862-0627-00	27.5°	M6	13	7.3

Dimensions

Order No.	α Pitch angle	a For external thread	\varnothing d1 mm	\varnothing d2 mm
30862-0630-00	30°	M6	13	7.3
30862-0632-00	32.5°	M6	13	7.3
30862-0635-00	35°	M6	13	7.3
30862-0637-00	37.5°	M6	13	7.3
30862-0640-00	40°	M6	13	7.3
30862-0642-00	42.5°	M6	13	7.3
30862-0645-00	45°	M6	13	7.3
30862-0647-00	47.5°	M6	13	7.3
30862-0650-00	50°	M6	13	7.3
30862-0652-00	52.5°	M6	13	7.3
30862-0655-00	55°	M6	13	7.3
30862-0657-00	57.5°	M6	13	7.3
30862-0660-00	60°	M6	13	7.3

	\times	α to your specifications		
30862-0300-00	\times	M3	8	3.3
30862-0400-00	\times	M4	10	4.3
30862-0500-00	\times	M5	10	5.5
30862-0600-00	\times	M6	13	7.3



Post fitting for external thread, for flat posts

1.13

For M8–M24

AISI 316 material group

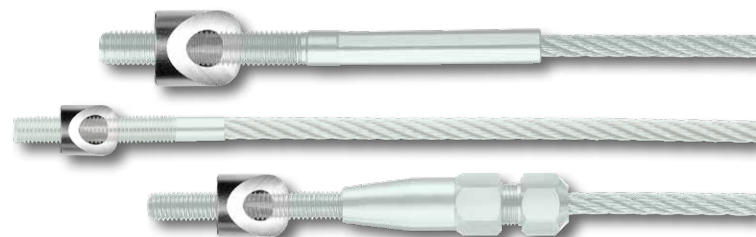
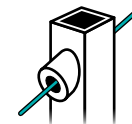
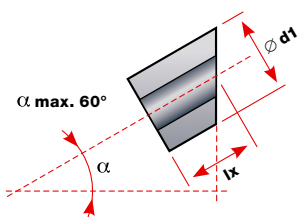
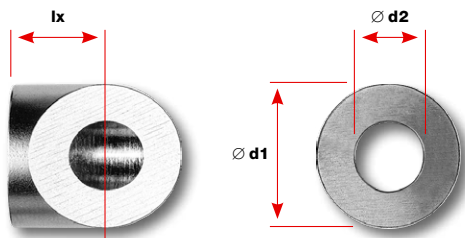
Dimensions

Order No.	α Pitch angle	a For external thread	\varnothing d1 mm	\varnothing d2 mm
30862-0801-00	0°	M8	18	8.5
30862-0820-00	20°	M8	18	8.5
30862-0822-00	22.5°	M8	18	8.5
30862-0825-00	25°	M8	18	8.5
30862-0827-00	27.5°	M8	18	8.5
30862-0830-00	30°	M8	18	8.5
30862-0832-00	32.5°	M8	18	8.5
30862-0835-00	35°	M8	18	8.5
30862-0837-00	37.5°	M8	18	8.5
30862-0840-00	40°	M8	18	8.5
30862-0842-00	42.5°	M8	18	8.5
30862-0845-00	45°	M8	18	8.5
30862-0847-00	47.5°	M8	18	8.5
30862-0850-00	50°	M8	18	8.5
30862-0852-00	52.5°	M8	18	8.5
30862-0855-00	55°	M8	18	8.5
30862-0857-00	57.5°	M8	18	8.5
30862-0860-00	60°	M8	18	8.5

Dimensions

Order No.	α Pitch angle	a For external thread	\varnothing d1 mm	\varnothing d2 mm
30862-1001-00	0°	M10	22	10.5
30862-1020-00	20°	M10	22	10.5
30862-1022-00	22.5°	M10	22	10.5
30862-1025-00	25°	M10	22	10.5
30862-1027-00	27.5°	M10	22	10.5
30862-1030-00	30°	M10	22	10.5
30862-1032-00	32.5°	M10	22	10.5
30862-1035-00	35°	M10	22	10.5
30862-1037-00	37.5°	M10	22	10.5
30862-1040-00	40°	M10	22	10.5
30862-1042-00	42.5°	M10	22	10.5
30862-1045-00	45°	M10	22	10.5
30862-1047-00	47.5°	M10	22	10.5
30862-1050-00	50°	M10	22	10.5
30862-1052-00	52.5°	M10	22	10.5
30862-1055-00	55°	M10	22	10.5
30862-1057-00	57.5°	M10	22	10.5
30862-1060-00	60°	M10	22	10.5

	x	α to your specifications		
30862-0800-00	x	M8	18	8.5
30862-1000-00	x	M10	22	10.5
30862-1200-00	x	M12	24	12.5
30862-1400-00	x	M14	24	14.5
30862-1600-00	x	M16	32	17
30862-2000-00	x	M20	32	21
30862-2400-00	x	M24	40	25



Post fitting for external thread, for round posts \varnothing 33 mm

1.14

For M3–M8

AISI 316 material group

Dimensions

Order No.	α Pitch angle	a For external thread	\varnothing d1 mm	\varnothing d2 mm
30862-0500-33	0°	M5	10	5.5
30862-0520-33	20°	M5	10	5.5
30862-0522-33	22.5°	M5	10	5.5
30862-0525-33	25°	M5	10	5.5
30862-0527-33	27.5°	M5	10	5.5
30862-0530-33	30°	M5	10	5.5
30862-0532-33	32.5°	M5	10	5.5
30862-0535-33	35°	M5	10	5.5
30862-0537-33	37.5°	M5	10	5.5
30862-0540-33	40°	M5	10	5.5
30862-0542-33	42.5°	M5	10	5.5
30862-0545-33	45°	M5	10	5.5
30862-0547-33	47.5°	M5	10	5.5
30862-0550-33	50°	M5	10	5.5
30862-0552-33	52.5°	M5	10	5.5
30862-0555-33	55°	M5	10	5.5
30862-0557-33	57.5°	M5	10	5.5
30862-0560-33	60°	M5	10	5.5

30862-0600-33	0°	M6	13	7.3
30862-0620-33	20°	M6	13	7.3
30862-0622-33	22.5°	M6	13	7.3
30862-0625-33	25°	M6	13	7.3
30862-0627-33	27.5°	M6	13	7.3
30862-0630-33	30°	M6	13	7.3
30862-0632-33	32.5°	M6	13	7.3
30862-0635-33	35°	M6	13	7.3
30862-0637-33	37.5°	M6	13	7.3
30862-0640-33	40°	M6	13	7.3
30862-0642-33	42.5°	M6	13	7.3
30862-0645-33	45°	M6	13	7.3
30862-0647-33	47.5°	M6	13	7.3
30862-0650-33	50°	M6	13	7.3
30862-0652-33	52.5°	M6	13	7.3
30862-0655-33	55°	M6	13	7.3
30862-0657-33	57.5°	M6	13	7.3
30862-0660-33	60°	M6	13	7.3

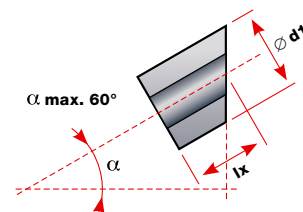
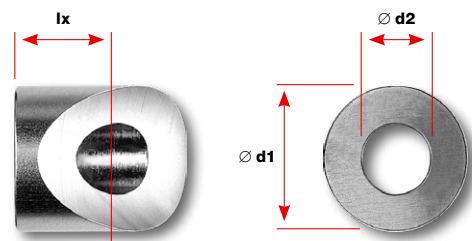
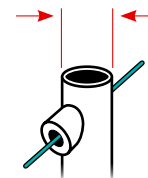
30862-0800-33	0°	M8	18	8.5
30862-0820-33	20°	M8	18	8.5
30862-0822-33	22.5°	M8	18	8.5
30862-0825-33	25°	M8	18	8.5
30862-0827-33	27.5°	M8	18	8.5

Dimensions

Order No.	α Pitch angle	a For external thread	\varnothing d1 mm	\varnothing d2 mm
30862-0830-33	30°	M8	18	8.5
30862-0832-33	32.5°	M8	18	8.5
30862-0835-33	35°	M8	18	8.5
30862-0837-33	37.5°	M8	18	8.5
30862-0840-33	40°	M8	18	8.5
30862-0842-33	42.5°	M8	18	8.5
30862-0845-33	45°	M8	18	8.5
30862-0847-33	47.5°	M8	18	8.5
30862-0850-33	50°	M8	18	8.5
30862-0852-33	52.5°	M8	18	8.5
30862-0855-33	55°	M8	18	8.5
30862-0857-33	57.5°	M8	18	8.5
30862-0860-33	60°	M8	18	8.5

	\times	α to your specifications		
30862-0300-01	\times	M3	8	3.3
30862-0400-01	\times	M4	10	4.3
30862-0600-01	\times	M6	13	7.3
30862-0800-01	\times	M8	18	8.5

No. 30862-...-01: \varnothing to your specifications



Post fitting for external thread, for round posts \varnothing 42 mm

1.15

For M3–M8

AISI 316 material group

Dimensions

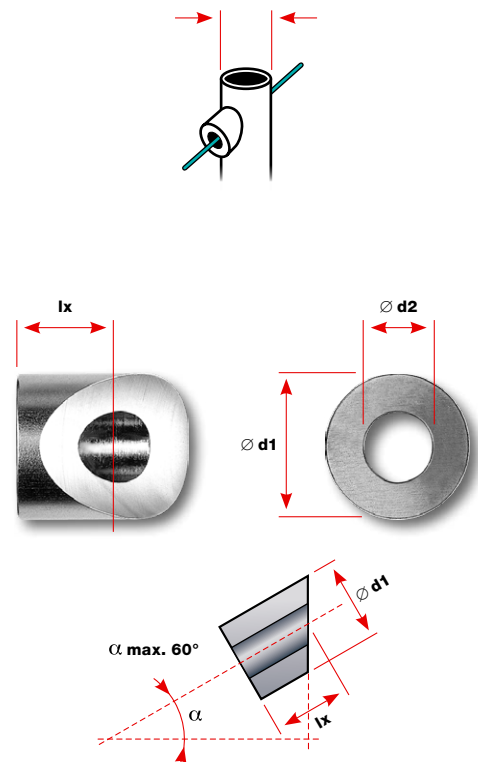
Order No.	α Pitch angle	a For external thread	\varnothing d1 mm	\varnothing d2 mm
30862-0500-42	0°	M5	10	5.5
30862-0520-42	20°	M5	10	5.5
30862-0522-42	22.5°	M5	10	5.5
30862-0525-42	25°	M5	10	5.5
30862-0527-42	27.5°	M5	10	5.5
30862-0530-42	30°	M5	10	5.5
30862-0532-42	32.5°	M5	10	5.5
30862-0535-42	35°	M5	10	5.5
30862-0537-42	37.5°	M5	10	5.5
30862-0540-42	40°	M5	10	5.5
30862-0542-42	42.5°	M5	10	5.5
30862-0545-42	45°	M5	10	5.5
30862-0547-42	47.5°	M5	10	5.5
30862-0550-42	50°	M5	10	5.5
30862-0552-42	52.5°	M5	10	5.5
30862-0555-42	55°	M5	10	5.5
30862-0557-42	57.5°	M5	10	5.5
30862-0560-42	60°	M5	10	5.5
30862-0600-42	0°	M6	13	7.3
30862-0620-42	20°	M6	13	7.3
30862-0622-42	22.5°	M6	13	7.3
30862-0625-42	25°	M6	13	7.3
30862-0627-42	27.5°	M6	13	7.3
30862-0630-42	30°	M6	13	7.3
30862-0632-42	32.5°	M6	13	7.3
30862-0635-42	35°	M6	13	7.3
30862-0637-42	37.5°	M6	13	7.3
30862-0640-42	40°	M6	13	7.3
30862-0642-42	42.5°	M6	13	7.3
30862-0645-42	45°	M6	13	7.3
30862-0647-42	47.5°	M6	13	7.3
30862-0650-42	50°	M6	13	7.3
30862-0652-42	52.5°	M6	13	7.3
30862-0655-42	55°	M6	13	7.3
30862-0657-42	57.5°	M6	13	7.3
30862-0660-42	60°	M6	13	7.3
30862-0800-42	0°	M8	18	8.5
30862-0820-42	20°	M8	18	8.5
30862-0822-42	22.5°	M8	18	8.5
30862-0825-42	25°	M8	18	8.5
30862-0827-42	27.5°	M8	18	8.5

Dimensions

Order No.	α Pitch angle	a For external thread	\varnothing d1 mm	\varnothing d2 mm
30862-0830-42	30°	M8	18	8.5
30862-0832-42	32.5°	M8	18	8.5
30862-0835-42	35°	M8	18	8.5
30862-0837-42	37.5°	M8	18	8.5
30862-0840-42	40°	M8	18	8.5
30862-0842-42	42.5°	M8	18	8.5
30862-0845-42	45°	M8	18	8.5
30862-0847-42	47.5°	M8	18	8.5
30862-0850-42	50°	M8	18	8.5
30862-0852-42	52.5°	M8	18	8.5
30862-0855-42	55°	M8	18	8.5
30862-0857-42	57.5°	M8	18	8.5
30862-0860-42	60°	M8	18	8.5

	\times	α to your specifications		
30862-0300-01	\times	M3	8	3.3
30862-0400-01	\times	M4	10	4.3
30862-0600-01	\times	M6	13	7.3
30862-0800-01	\times	M8	18	8.5

No. 30862-...-01: \varnothing to your specifications



Length lx of post fittings

1.15.2

∅ **d1**

Outside diameter of your post fitting

Dimensions

Pitch angle α	∅ d1	∅ d1	∅ d1	∅ d1	∅ d1	∅ d1	∅ d1	∅ d1	∅ d1
	8 mm	10 mm	13 mm	18 mm	22 mm	24 mm	32 mm	35 mm	40 mm
	lx mm	lx mm	lx mm	lx mm	lx mm	lx mm	lx mm	lx mm	lx mm
0°	3,0	3,0	3,0	3,0	3,0	5,0	5,0	5,0	5,0
2,5°	3,1	3,2	2,3	3,4	3,5	3,5	3,7	3,8	3,9
5°	3,4	3,4	3,6	3,8	4,0	4,1	4,4	4,5	4,7
7,5°	3,5	3,7	3,9	4,2	4,5	4,6	5,1	5,3	5,6
10°	3,7	3,9	4,1	4,6	4,9	5,1	5,8	6,1	6,5
12,5°	3,9	4,1	4,4	5	5,4	5,7	6,5	6,9	7,4
15°	4,1	4,3	4,7	5,4	5,9	6,2	7,3	7,7	8,3
17,5°	4,3	4,6	5	5,8	6,5	6,8	8	8,5	9,3
20°	4,5	4,8	5,4	6,3	7,0	7,4	8,8	9,4	10,3
22,5°	4,7	5,1	5,7	6,7	7,6	8	9,6	10,2	11,3
25°	4,9	5,3	6,0	7,2	8,1	8,6	10,5	11,2	12,3
27,5°	5,1	5,6	6,4	7,7	8,7	9,2	11,3	12,1	13,4
30°	5,3	5,9	6,8	8,2	9,4	9,9	12,2	13,1	14,5
32,5°	5,5	6,2	7,1	8,7	10	10,6	13,2	14,2	15,7
35°	5,8	6,5	7,8	9,3	10,7	11,4	14,2	15,3	17,0
37,5°	6,1	6,8	8	9,9	11,4	12,2	15,3	16,4	18,3
40°	6,4	7,2	8,5	10,6	12,2	13,1	16,4	17,7	19,8
42,5°	6,7	7,6	9	11,3	13,1	14	17,7	19	21,3
45°	7,0	8,0	9,5	12,0	14,0	15,0	19,0	20,5	23,0
47,5°	7,4	8,5	10,1	12,8	15	16,1	20,5	22,1	24,8
50°	7,8	9,0	10,7	13,7	16,1	17,3	22,1	23,9	26,8
52,5°	8,2	9,5	11,5	14,7	17,3	18,6	23,9	25,8	29,1
55°	8,7	10,1	12,3	15,9	18,7	20,1	25,9	28,0	31,6
57,5°	9,3	10,9	13,2	17,3	20,3	21,8	28,1	30,5	34,4
60°	9,9	11,7	14,3	18,6	22,0	23,8	30,7	33,3	37,6



If you indicate the **pitch angle** (and the pipe ∅ if your post is round), we will supply the matching post fitting for any application. Dimensions are subject to change.

How to use the “lx” table

The column on the left lists pitch angles α from 0° to 60°. Select the row which lists the pitch angle you need for your application.

Caution: the maximum post fitting pitch (α) is 60°.

Now look for the outside diameter **d1** that you want your post fitting to have. Length **lx** (see adjacent illustration for details) is listed where this column intersects with your pitch angle row.

For each post fitting, length **lx** is important for defining the assembly length. If you wish to use an external thread instead of a countersunk head, the correct assembly length is obtained by adding the protruding length of the screw.

